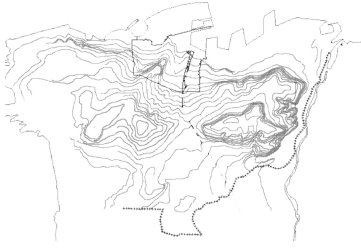


## Culture\_ Skin

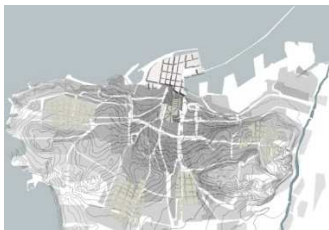
A sensitive protection for human creativity

. . . . GATHER NOW! EVERY LITTLE AND PRECIOUS  
FRAGMENT SCATTERED UP TO NOW . . . .

general frame



The context in which this project is set has as its main protagonist the current form of cities, the *net-city*, whose scale seems to have multiplied exponentially, becoming the framework of the stratification and condensation of forms representing fragments of the history of a particular site. Today, the form of cities must come to grips with the acceleration of life rhythms and global communication with the ensuing increase in migratory flows of people. Thus ways must be found to respond to the new order of magnitude and contemporary complexity. The concept of urban totality refers to domains that are no longer physically contiguous but rather far away and discontinuous.



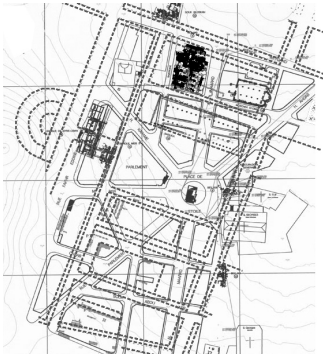
Access to these domains is fostered by infrastructural networks that increasingly emphasize the urban structure. The mental map of the *city-users* becomes the sum of addresses and local regulations, which must convey different meanings and values. The city no longer exclusively satisfies the needs of its resident population, which is geographically relocated and moves around, and its features are embodied in the notion of universal citizenship. Therefore there is a lack of identity in a maze of settlements which lack autonomy, both in terms of meaning and internal distinction, moving more in the direction of universality and standardization.

urban biography

Drawing up an *urban biography*, that is identifying strategic layers. The original and founding remains are essential as they provide the notion of the region that emerges through the landscape as scenarios that have witnessed the foundation and have generated primitive vestiges.

Stratification

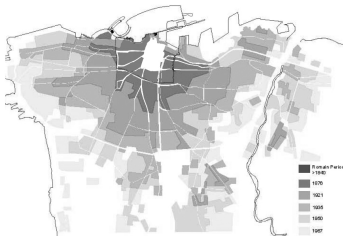
The stratigraphic sequence shows in this as in other cases the start and the end, the development and the conclusion, the continuity and discontinuity, the fragmentation, the cancellation



superimposition



traces/tracings



symbolic value

Multilayers/multidisciplinary

but above all the revelation of profound primitive vestiges, *undecomposable urban material* that became a trace for the new urban “skin” of Beirut.

Thanks to the emergence of new operational planning instruments such as *bigness, size, collage, assembly, superimposition, stratification, mega-blocks etc.* a new range of intervention solutions are available as strategic concept in the new metropolitan and architectural scale to obtain appropriate architecture for new urban landscapes.

The city of Beirut, as we know today, is the result of a deep stratification of many cities that have their origin on the Mediterranean coast of the middle oriental area, recognized at a universal level as the primitive cradle of civilization. The geographical placing and the all the orographical system transformed the city in a fundamental crossing and connection between east and west; city here is conceived as new threshold and understood as new opening, outbreak of future, as a place of connections, of people, of cultures.

As a suspended architecture, the new architectural system proposes an intervention that considers on one hand the historical and environmental peculiarities of the area, marked by connective tracings, former urban existences, architectural monuments, on the other hand the new needs of transformation, connected whether to strategic position of the place, or to quality of the current or future architectural presences.

The conditions of the context are read again as specific reasons to link the choices and the purpose of the transformation as a program that is directed to give back simultaneously formal quality, symbolical value and functional meaning to every places that are considered.

In this view the following points are fundamental:  
 -to explain again the theme of the connections across the definition of a system made of public spaces and places that look for their continuity in horizontal and vertical run able to put together the different levels of intervention:  
 -to answer to a functional complicated question able to preview

a tidy articulation of the different activities (cultural, artistic and experimental), so to guarantee as a mixed use and a dilatation of the time of attending by different people. By the light of these purposes, the intervention has like an aim to answer to the complicated reasons that are physical, social and technical placed themselves.

New city gate/landmark



As a unitary system able to be recognized from above and at the same time mark the particularity of the place across a dialectic relationship with the existential that already live. As a multiple threshold able to define the new gate of access to the city by a new architecture based on relationships. Established a new horizon line, the project proposes an architectural regulating that works according to complementary grafts of light articles, as a whole of installation on one hand light, that is able to oppose itself with its stereometry to the gravity of the below substance and on the other hand powerful, that is able to catalyze with its force many tensions that are around.

Architectural concept



The architectural answer framed in the “societes of spectacle” born from the spirit of “condensing” through a “formal seduction operation” either urban fragments or particularly precious creativity fragments. In the same way it will be an attractor of external creativity forces. The “setting” ( as a show ) through a syntactic materialization of the “gather of flows concept” becomes the expressive-dialectic architectural language. The building is composed by four big blocks with a sliver shape generated by a soils verticalisation operation. It’s important to know that the project is not composed by 4 blocks supported by a basement, but it’ is realized by crystallized soils that raises up to the sky.

crystallized soils

The main hall results from the soils interlacement through a magic game of suspension and excavation between full and empty spaces. The space generated is a labyrinthic flow with a multiface perception.

labyrinthic flow

The urban space is throw to the building's interior through one of the project soils named “culture garden” creating a direct landscape outside-inside relationship. The main and the second performance hall are generated through slicing soils that

subsequently throw themselves toward the sky. The architectural intention is that the house of arts will become a landmark that expresses exteriorly its unit wish through a sober and purist language, while internally like a movie set showing the incomparable richness of the "fragmentary variability" through the central space in contact with the sky.

flexibility

These spaces, provided with the maximum of the spatial flexibility, got by the use of mobile and sliding walls (mat and translucent), are protected by a skin that has the purpose to stop the vertical surfaces but, above all, to carry out a diaphragm, a filter of permanent connection between the inside and the outside of the building.

wall/diaphragm/membrane



This skin, separate in the texture for every one of the four vertical blocks, technically it offers the greatest micro-environmental interior comfort and, above all, it immaterializes the concept of the wall, carrying out the perception of a soft (light) superficial layer to protection of precious contents that is directed to receive the various functions that can be expressive, artistic, experimental and expositive.

textures/textile



The technological choice that is adopted is directed also to the continue use of the building, its use for 24 hours by the day, so we can get an opposite relation between the inside and the outside of the building, with the change between the day and the night, between light and shade.

So the permeability is physical, but not only: in a conceptual way, the building is pervaded by many fluxes of men, ideas, virtual connections and, at the same time, the building is the materialistic form of the human creativity directed to the future.

