

MAGIC-CUBE

1

1) Introduction

The destruction by the war reached various urban facilities in Beirut. Cultural facilities were not exceptions.

This Lebanese-Omani Centre have been planned aiming to consolidate and reproduce lost cultural facilities in Beirut. We caught this ambitious aim as the target of our proposition.

2) Target

Although the narrow site area, regulations for the site and the variety of the architectural program were very severe, we assume this cultural center requires not only the clear functional solution but also characteristic space and architectural expression for linking to the past and to the brilliant future of Beirut.



View the site with Beirut City



2

Design Concept - Magic-Cube -

We propose a compact and high density cultural complex facility; Internal space with natural transparent light of the Mediterranean sea is main factor of this architecture.

1) "Cube"

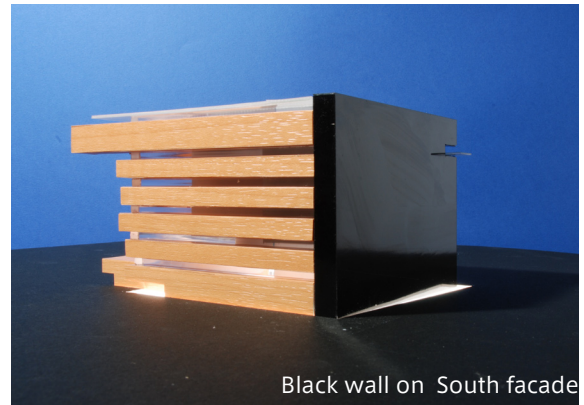
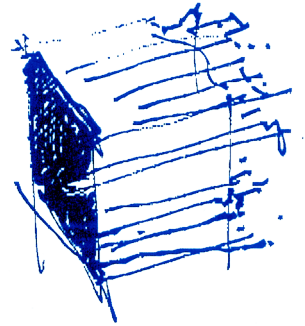
This cultural center is shaped simple cubic volume to make the most of the potential of the possible building volume and abstract symbolic expression.

2) "Black wall" and "Dynamic Floating Volumes"

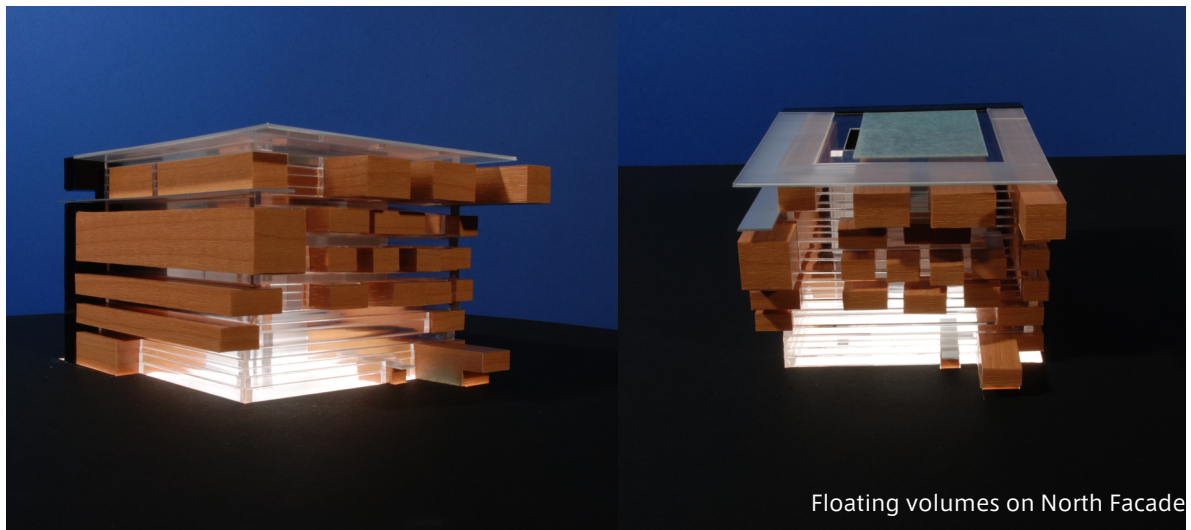
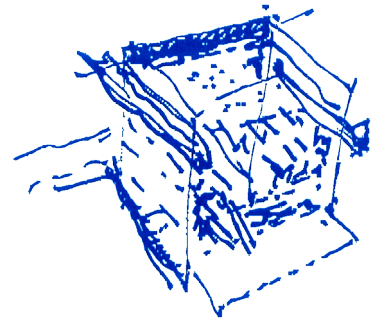
South facade is raised up from ground as a monolithic black wall. From the wall, horizontal culture facility volumes are extent to toward North.

North facade is coming out the facility volumes as a group of rectangular solid mass over multi layer.

The south side thick black wall catch the historical memory of Beirut and North side dynamic facade symbolize future development of the Beirut city.



Black wall on South facade



Floating volumes on North Facade

3) "Magic-Canyon"

-Void space with abundant natural light

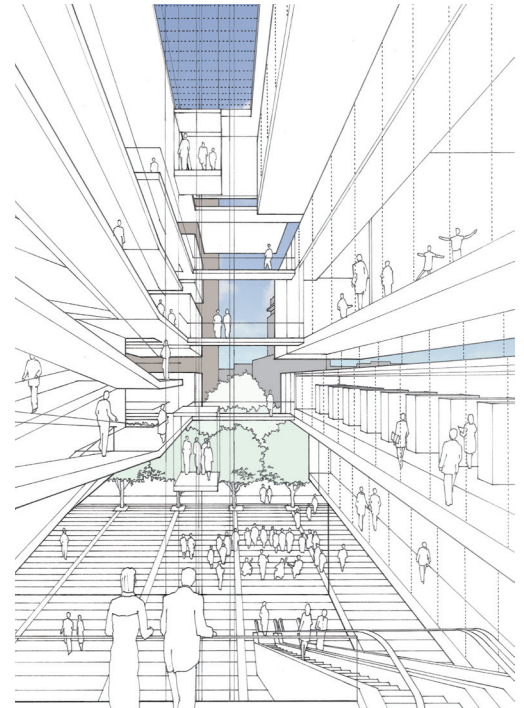
Natural light is introduced from the top lights and the facade of north, east and west side into the inside of the cube that involves various cultural facilities.

As well as achieving the space quality of each facilities function, it is intended in this proposal as important circulation and void space that connects between these function each other with lively activity .

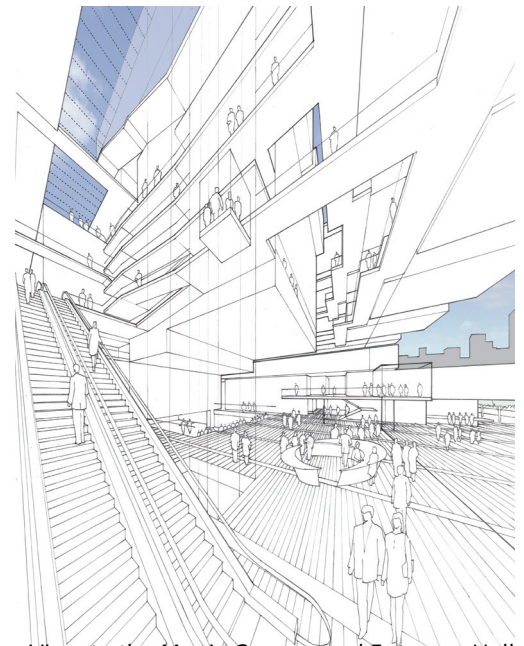
We propose a new internal space which is enlarged, managed and layered magical space in traditional Suq with softened sunlight.

4) "Magic-Cube"

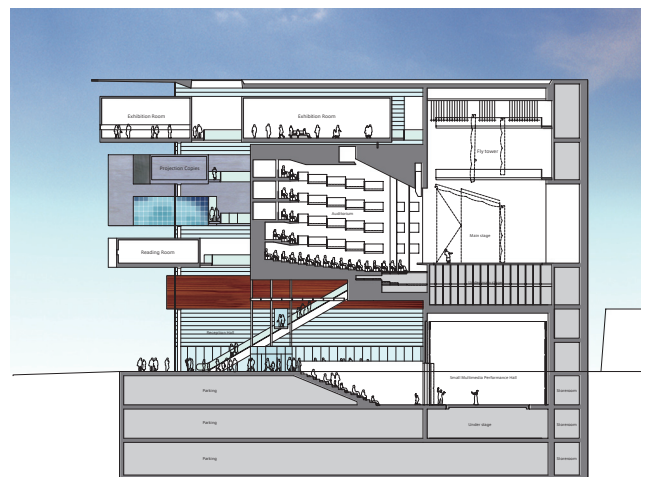
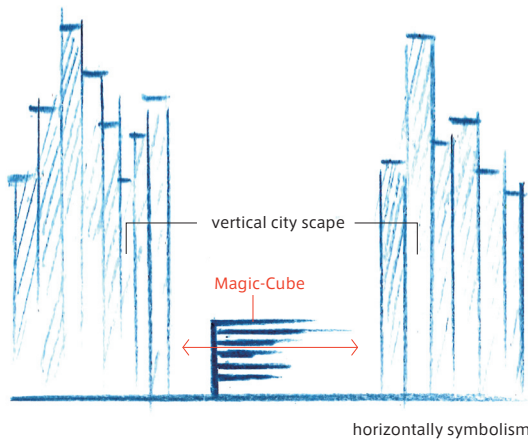
By integration of methods 1), 2) and 3), we propose new symbolical cultural facility "Magic Cube" in Beirut, Lebanon. "Magic Cube" is attracted by the abstract cube and the dynamically and horizontally rectangular solid volume group. "Magic-Cube"; waking the potential to the future of Beirut by giving a certain tension to a vertical city scape of skyscrapers that will be developed in the days ahead.



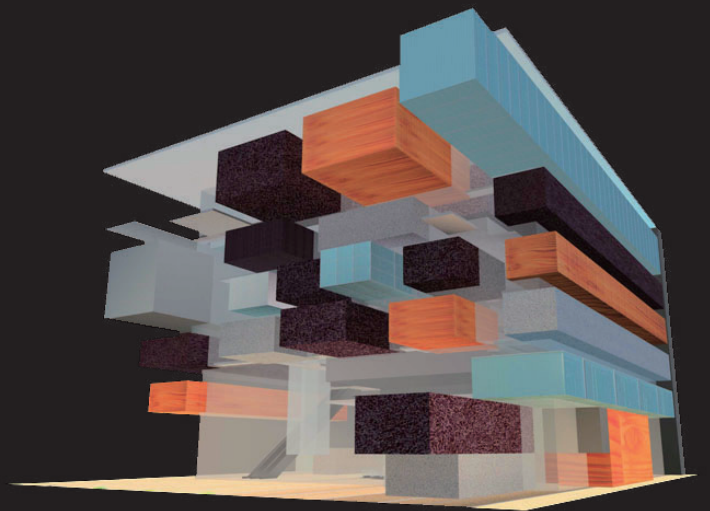
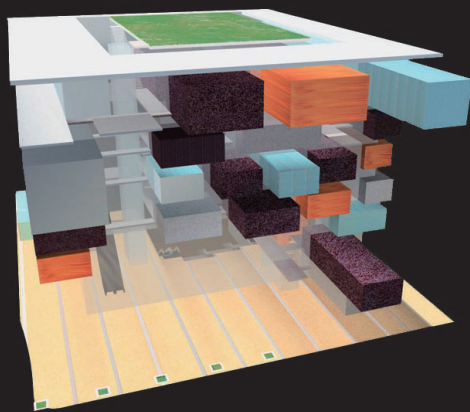
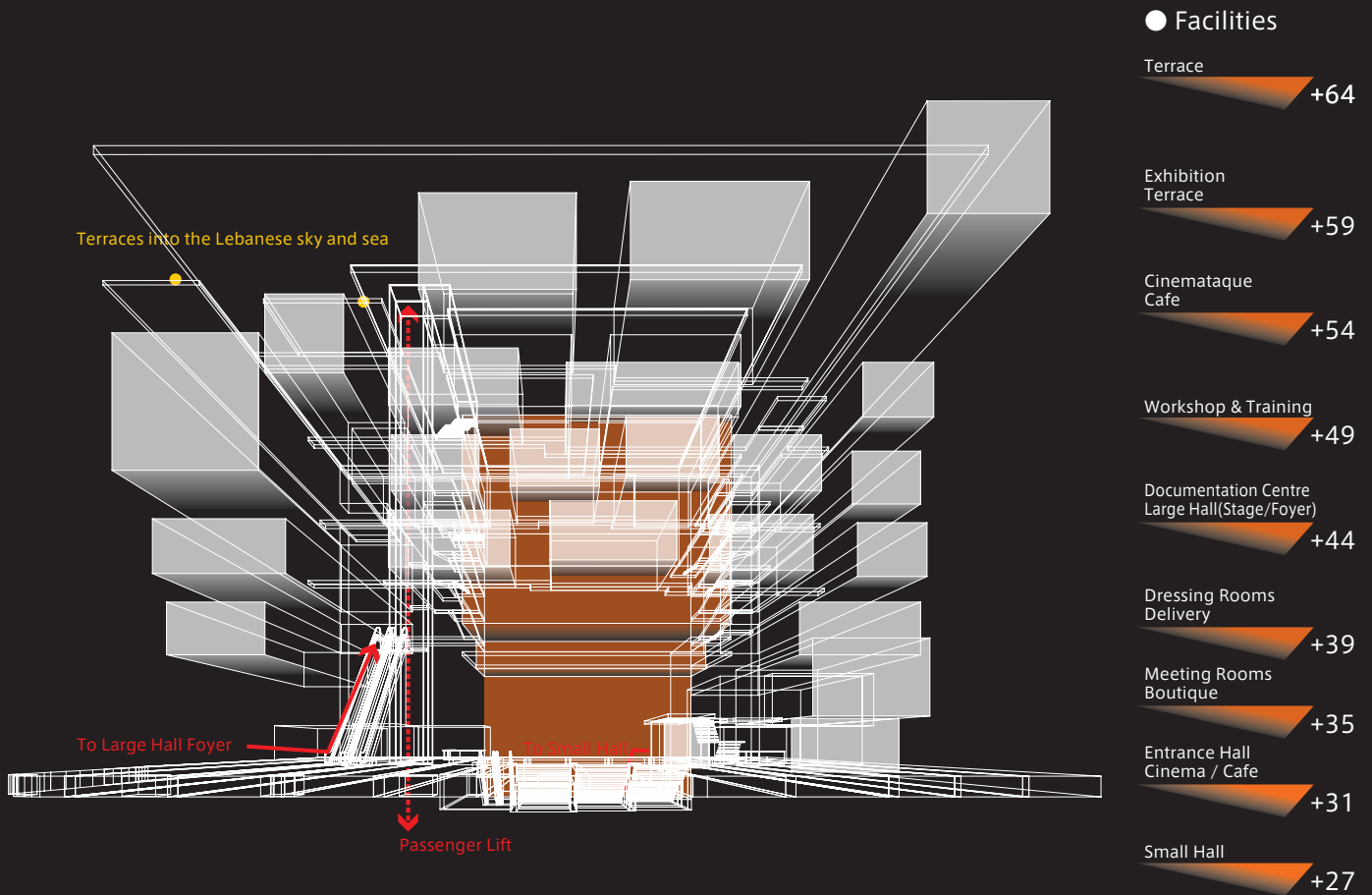
View from Foyer of the Large Hall to Plaza



View to the Magic-Canyon and Entrance Hall



North-South Section



● Structure

Slim columns are settled at random for support horizontal volumes.

● Environment control for energy saving

During mild season, natural ventilation by opening of facades and roof is used for control the interior environment to ensure energy saving. Mas volumes around theater shall be used for thermal storage wall not only for night purge system but also for moderation of mechanical air conditioning.